

ABOUT US

Caldereria Terns S.L. is a Boiler Works company founded on 1977, ISO 9001 Certified and PEI member, specialized on manufacturing Fuel Storage Tanks, Pressure Vessels, and its main product THE BOX Container Service Stations:

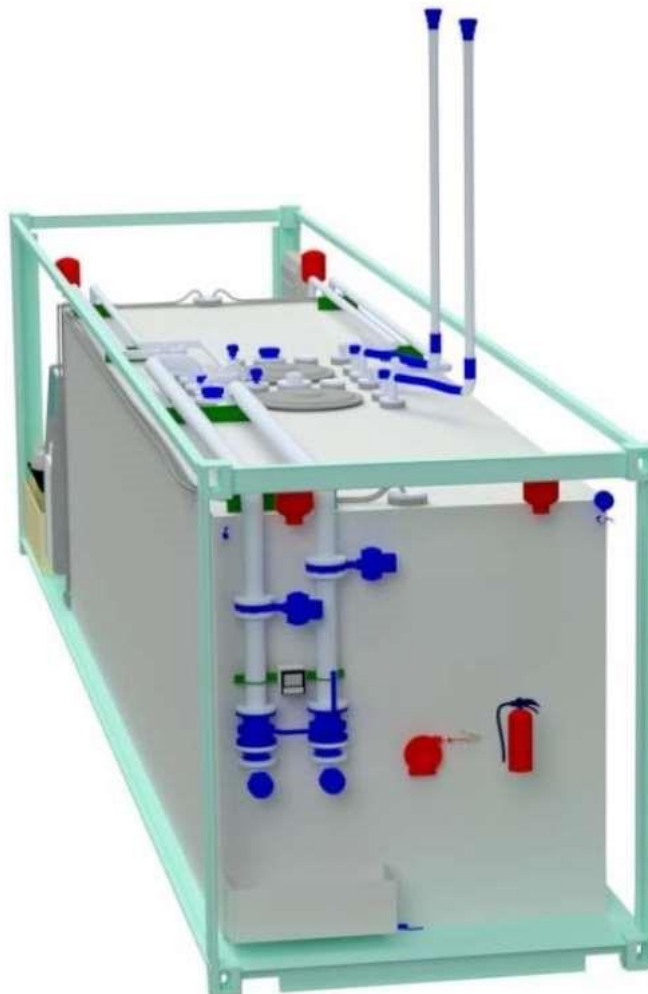
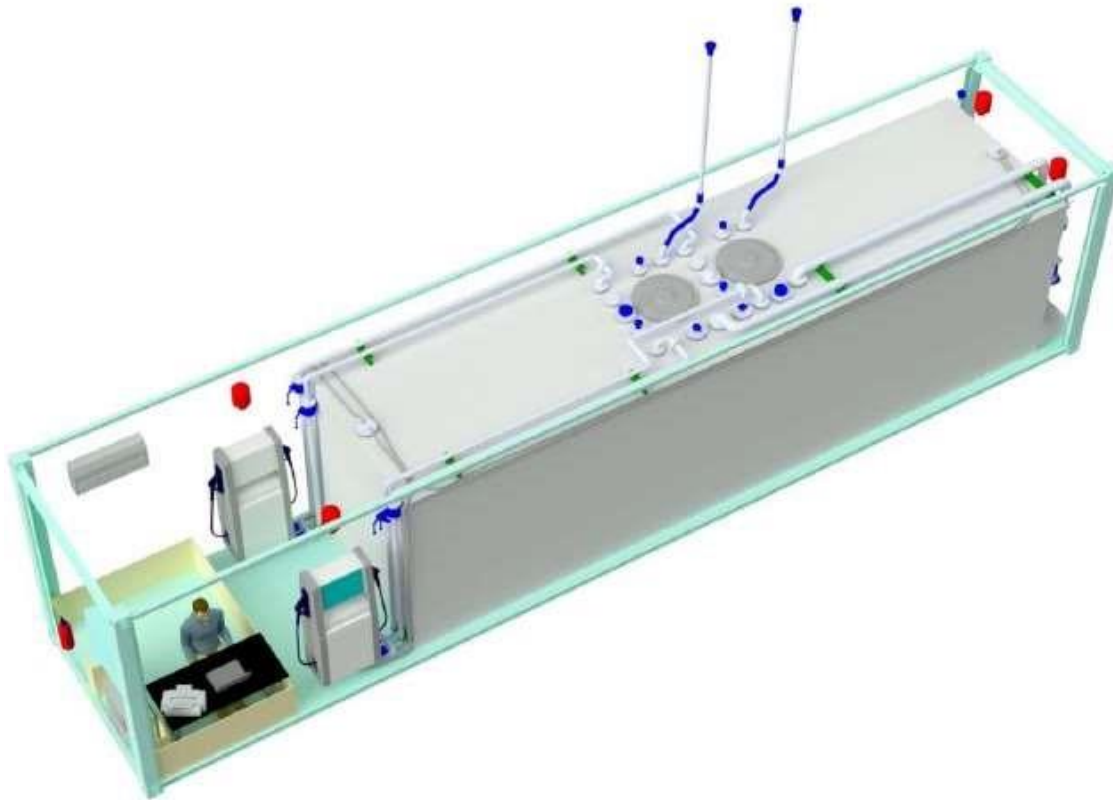
- THE BOX is a modern concept on Fuel Stations, safe and more environmental friendly than conventional petrol stations with underground fuel tanks.
- THE BOX it's more cost efficient than a traditional service station. Because its high profitability will help OMCs to invest in areas where without this system is not economically viable.
- THE BOX is a Heavy Duty construction, built to work hard with low maintenance, during many years.
- THE BOX is built and certificated according Spanish and International regulations.



BASIC DESCRIPTION

Introduction:

The next stations are built according KPNC Mobile Petrol Filling Stations Specs. of 2016. Caldereria Terns is an Approved Manufacturer for KNPC and has built 8 Stations for them, approved by Kuwait Fire Service Directorate.



TECHNICAL PROPOSAL

CONTAINER:

Cabinet made from 1st trip ISO Container Dry-Van

40'HC or 20HC:

- Rockwool Insulated
- 2 Lanes lateral Dispenser Cabinet, with non-slip grating floor, access by roller shutter doors.
- Small Office, with 2 windows and AC Provision (AC not Included)
- Ventilation grids
- Roof's Access Cover to tank's manhole
- Caged ladder and roof railing.

1.

-External finish: Polyurethane RAL9010, with maritime corrosion protection ISO12944 C5

- Dimensions BOX 40':
12192x2438x2896mm of height
And 15 Tons of weight
- Dimensions BOX 20':
6059x2438x2896mm of height and
9 Tons of weight



TANK:

Double Wall Cubic Tank, according to Standard BS799-5: 2010 and EUROCODE-3 EN1993-4-2: 2007 +A1:2017

-Main tank material: 6mm S275JR carbon steel.

-Manhole DN600

2. -External finish: Polyurethane, corrosion protection ISO12944 C3

-Internal lining: Epoxy Phenolic

-Rockwool insulation and aluminum cladding.

-ATEX Vacuum leak detector with alarm.



DISPENSER:

WAYNE HELIX 1000, Suction type, according
KNPC

3. Specs

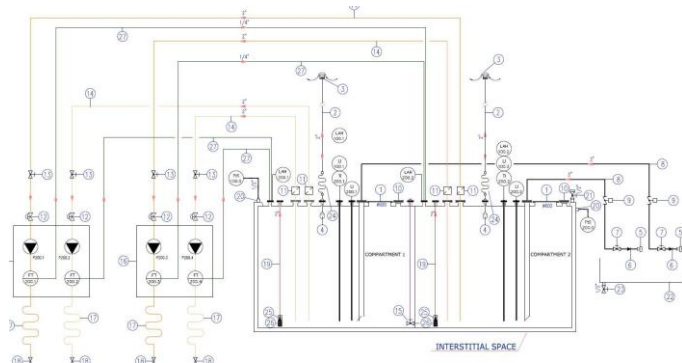


HYDRAULIC NETWORK

Welded and tested steel pipes, flanged ends. -Suction
pipes Ø2" equipped with filter, isolation valve and
anti-siphon device with pressure relief valve.

4. -Filling pipes Ø3", with connection Cam lock,
shutoff valve, non-return valve and overfill
prevention valve EN13616 certified.

-Vents pipes Ø2", with Pressure/Vacuum vent valve
and flame arrestor.



AUTOMATIC TANK GAUGE

-Automatic Tank Gauge TOKHEIM PROGAUGE with MAGLINK LX ATG au the office and DIGIMON at filling point

5.

-Dipstick and Dipstick chart.



6.

ATEX ELECTRICAL INSTALLATION:

- Distribution panel with protection devices, LED interior Lighting on technical areas, emergency lights, emergency Stop button and wiring to all electrical devices.
- Safety equipment for Gasoline (Earthling, Electrical Installation and ATEX material (Explosive Atmosphere))
- MICC Fire Survival Electric cable



6.

FIRE EXTINGUISHERS:

- 4 Automatic fire extinguishers 6Kg of ABC powder,
- 7. Activated at 80°C
- 2 manual fire extinguisher 9Kg of ABC powder



Excluded from the Supply:

- Air Conditioning
- Installation on the destination area
- Electric connections and grounding on site
- Local approvals.
- Anything else not explicitly mentioned in this offer

THE BOX will be supplied with:

- Origin and conformity declarations
- Tank manufacturing declaration in conformity with British Standard BS799-5:2010 and EUROCODE 3 EN 1993-4-2:2007+A1:2017
- Use and maintenance manuals in English -

Further to the client's acceptance of this offer, THE BOX will provide an executive plan of the project, to be agreed with the final client, to establish details and functions of the equipment needed. The container must be installed on a perfectly levelled platform, suitable to withstand the system fully loaded. The container must only be moved when empty.

Warranty:

- Tank: 10 years
- Piping: 3 year
- Other equipment: according to manufacturer.